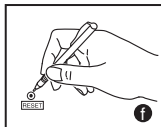
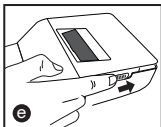
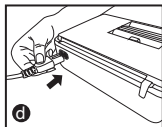
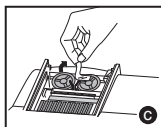
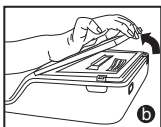
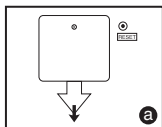


## CONTENTS

BEFORE STARTING.....	P.1
INSERTING PRINTING PAPER.....	P.2
REPLACING THE INK RIBBON.....	P.2
BACKUP BATTERY .....	P.3
GENERAL MAINTENANCE .....	P.3
DECIMAL POINT SELECTOR SWITCH.....	P.3
ROUNDING SWITCH.....	P.4
GRAND TOTAL / TAX RATE SET SWITCH .....	P.4
ITEM COUNT SWITCH.....	P.4
MEMORY / CURRENCY CONVERSION SELECTION SWITCH .....	P.5
TAX CALCULATION FUNCTION.....	P.6
BUSINESS SALES CALCULATION.....	P.6
CLOCK & CALENDAR FUNCTION.....	P.6
AUTO POWER SAVE .....	P.6
OVERFLOW .....	P.7
SPECIFICATIONS.....	P.7
CALCULATION EXAMPLE .....	P.71-80


## BEFORE STARTING

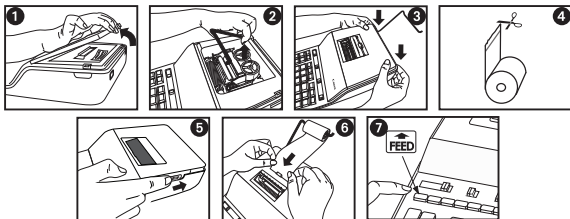
- 1) Remove the insulation tape at the back of calculator. (Figure **a**)
- 2) Remove the tape on the ink ribbon of calculator. (Figure **b**, **c**)
- 3) Plug in AC power cord. (Figure **d**)
- 4) Turn power switch on. (Figure **e**)
- 5) Press [RESET] key before use. (Figure **f**)



## INSERTING PRINTING PAPER

**Note :** Turn the power off

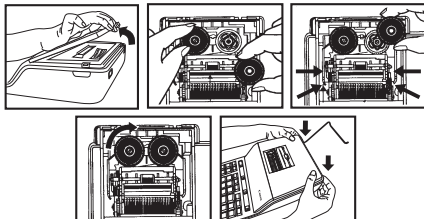
- 1) Remove the printer cover (Figure ①) and lift up the paper arm (Figure ②).
- 2) Replace the printer cover (Figure ③).
  - When inserting the paper, cut the edge of the paper as shown (Figure ④).
- 3) Turn the power switch on (Figure ⑤).
- 4) Place the new paper roll on the arm. The edge of the paper should be positioned as shown (Figure ⑥).
  - Suitable paper roll -- Width : 57mm (2-1/4") / Diameter: 86mm (3-3/8")
- 5) Press the paper feed key  to advance the paper (Figure ⑦).



## REPLACING THE INK RIBBON

**Note:** Turn the power off.

- 1) Remove the cover and lift up the paper arm.
- 2) Lift ribbon spools off the shafts. Discard the old ribbon and spools.
- 3) Place the ribbon spool on the left spool pin and push it down until it clicks.
- 4) Thread the ribbon along the outer edge of the side guide, making sure that the black half of the ribbon is still on the top.
- 5) Place the ribbon between the printing ring and printing roller. Thread the ribbon along the outer edge of the left side guide.
- 6) Place the other ribbon spool on another spool pin.
- 7) Push the spool down until it clicks.
- 8) Take up any ribbon slack by rotating the left spool counterclockwise.
- 9) Replace the printer cover.



**IMPORTANT:** Use only the same type of ribbon spools.

## BACKUP BATTERY

Memory backup battery retains the currency rate, tax rate, calendar and clock setting, even if the power is off or the AC cord is disconnected.

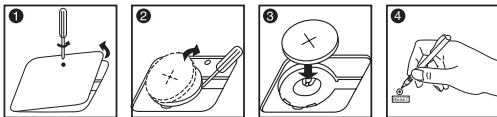
Battery : 1 Lithium battery (Type : CR2032)

Battery life : Backup time 2000 hours

**CAUTION:** Risk of explosion if battery is replaced by an incorrect type.

Dispose of used batteries according to the instruction.

Dispose of batteries according to local regulations. Do not dispose as household waste.



After replace the back-up battery, press the [RESET] button, after resetting be sure to set the currency rate, tax rate, clock and calendar again.

## GENERAL MAINTENANCE

- 1) Do not use or leave the calculator under direct sunlight. Press subject to rapid temperature changes, high humidity, dust and dirt should also be avoided.
- 2) Use a dry cloth to clean the casing of the unit. Do not use water or detergents.
- 3) Activate the printer when the paper roll is loaded.
- 4) Avoid using the calculator in places where there are iron filings, as this may affect the electrical circuits of the calculator.
- 5) Do not place anything on top of the machine, particularly on top of the printer mechanism.
- 6) Turn the calculator off before removing the plug from the electrical outlet.
- 7) Pull the main plug out of the wall socket if you want to switch off the main power or in case of electrical fault (i.e. smoke), disconnect the plug from the electrical socket outlet immediately.
- 8) The AC outlet must be located near the equipment and easily accessible.
- 9) Under the environment with electrostatic discharge, the sample may malfunction and require user to reset the sample.

## DECIMAL POINT SELECTOR SWITCH



– Used for designating the decimal point position (+ 0 2 3 4 6 F) for calculated results.



**+ (Add-Mode)** – Addition and subtraction functions are performed with an automatic 2-digit decimal. It is convenient for currency calculations.



**F (Floating Decimal Point)** – All effective numbers up to 12 digits are printed or displayed.

## ROUNDING SWITCH

ROUNDING



- Used for round-up [  $\uparrow$  ], round-off [5/4], or round-down [  $\downarrow$  ] to the pre-selected decimal digits in the result.

## GRAND TOTAL / TAX RATE SET SWITCH

### GRAND TOTAL



- When the calculations are performed with the GT switch set to "ON", the total(s) are accumulated in the grand total memory. Each time  $\Sigma$  is pressed, the subtotal number is printed with the symbols G+. When  $\overline{\text{GT}}$  is pressed, the intermediate grand total is printed with the symbols G $\diamond$ . Press  $\overline{\text{GT}}$  successively to get the grand total followed by the symbols G $\times$ .

### TAX RATE SET



- Set switch to "TAX RATE SET" for setting or recalling the TAX rate.

## ITEM COUNT SWITCH



- At "n+" or "n+/-" position, the calculator counts and print the number of calculation items up to 999.

### < ITEM COUNT >

When the "ITEM" switch is set at "n+", the calculator counts the number of times the  $+$  and  $-$  keys are pressed.

When the switch is set at "n+/-", the calculator counts the number of times the  $+$  key is pressed and subtracts from the total numbers of times the  $-$  key is pressed.

### < MEMORY ITEM COUNT >

When the "ITEM" switch is set at "n+", the calculator counts number of times  $\overline{\text{M}}$  and  $\overline{\text{M}}$  keys are pressed.

When the switch is set at "n+/-", the calculator counts the number of times the  $\overline{\text{M}}$  key is pressed and subtracts from the total number of times the  $\overline{\text{M}}$  key is pressed.

### < PRINTOUT OF ITEM COUNT >

When the PRINT switch is turned "ON", and the "ITEM" switch is at the "n+" or "n+/-" position, the number of items recorded by the counter can print up to three digits on the left-hand side of the paper by pressing either the  $\#0$  key or the  $\Sigma$  key for item count and  $\overline{\text{M}}$  key or  $\overline{\text{M}}$  key for memory item count.

## MEMORY / CURRENCY CONVERSION SELECTION SWITCH

### Memory Calculation



– Switch to "PRINT MEM ON" position to perform calculation using memory and basic calculation function. Entries and result will appear on the display and printout.



– Entries and result will appear on the display but will not be printed out.

### Currency Conversion Calculation



– Switch to "PRINT CONV. ON" position to perform currency conversion and basic calculation function. Entries and result will appear on the display and printout.



– Entries and result will appear on the display but will not be printed out.



– Press  $\boxed{[*]}$  and hold for 1 second, then enter the currency conversion rate and press  $\boxed{[M\phi]}$ ,  $\boxed{[M\pm]}$  or  $\boxed{[M\pm]}$  to store the rate.



– Press  $\boxed{[C]}$ ,  $\boxed{[M\phi]}$ ,  $\boxed{[M\pm]}$  or  $\boxed{[M\pm]}$  to recall the stored currency conversion rate.



– Press  $\boxed{[M*]}$  to convert currency figure displayed from  $\boxed{[M\phi]}$ ,  $\boxed{[M\pm]}$  or  $\boxed{[M\pm]}$  to the  $\boxed{[M*]}$ .



– Press  $\boxed{[M\phi]}$ ,  $\boxed{[M\pm]}$  or  $\boxed{[M\pm]}$  to convert displayed figure from  $\boxed{[M*]}$  to  $\boxed{[M\phi]}$ ,  $\boxed{[M\pm]}$  or  $\boxed{[M\pm]}$ .

### \*1 Specifying the Number of Decimal Places for Intermediate Local Currency Amounts.

When you convert from one national currency to another, the calculator internally converts the original currency to Local currency. This conversion result is the "intermediate Local currency amount". Next, the intermediate Local currency amount is converted to the target currency. The flow of the steps of the conversions will be shown on the printout.

For such a calculation, you should use the following procedure to specify the number of decimal places for the intermediate Local currency amount. You can specify from 0 (\*2) to 9 decimal places, for a floating decimal point (F). The intermediate Local currency amount is rounded off to the number of decimal places you specify.

\*2 0 is displayed when F (floating point) is set for the number of decimal places. F is the initial default setting.

■ For rates of 1 or greater, you can input up to six digits. For rates less than 1 you can input up to 8 digits, including 0 for the integer digit and leading zeros (though only six significant digits, counted from the left and starting with the first non-zero digit, can be specified).






## TAX CALCULATION FUNCTION

- TAX+** **Add Tax Key** – Used for adding the tax amount to the displayed figure.
- TAX-** **Deduct Tax Key** – Used for deducting the tax amount from the displayed figure.

## BUSINESS SALES CALCULATION

- COST** **SELL** **MARGIN** – Used for calculating the cost, selling price and profit margin value. Enter the value of any 2 items to obtain the balance value item. (e.g. enter the value of the cost and the selling price to obtain the profit margin %.)

## CLOCK & CALENDAR FUNCTION

-  – Used to switch between calendar or clock mode.
-  – Used to switch between 12 or 24 hour at clock mode.
-  – Used to set the date and time in calendar & clock mode.
-  – Used to switch between AM or PM at clock mode time setting.
-  – Used to select date format between "YYYY/MM/DD", "DD/MM/YYYY" or "MM/DD/YYYY" at calendar mode.

- **Note:** If all the power sources and backup battery "CR2032" are disconnected, the clock, calendar, currency rate and tax rate will be cleared. In this case, please set the clock, calendar, currency rate and tax rate again.

## AUTO POWER SAVE

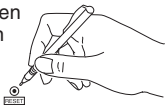
When the power is turned "ON" and the calculator is not being used for approx. **7 minutes**. The calculator will switch to power save mode automatically with orange LED light-up. Press **[C]** key the calculator will return to normal calculation mode.

## OVERFLOW

In the following cases, when "E" is displayed, "ERR" is printed, the keyboard is electronically locked, and further operation is impossible.

Press **C** to clear the overflow. The overflow occurs when:

1. The result or the memory content exceeds 12 digits to the left of the decimal point.
  2. Dividing by "0".
  3. The sequential operation speed is faster than the calculation processing speed. (Buffer Register Overflow)
- Electromagnetic interference or electrostatic discharge may cause the display to malfunction or the memory, currency rate and tax rate to be lost or altered. Should this occur, use the tip of a ballpoint pen (or similar sharp object) to press the [RESET] button on the back of the calculator. After resetting be sure to set the calendar, clock, currency rate and tax rate again.



## SPECIFICATIONS

Power Source: AC100V - 240V, 50/60Hz

Operation Temperature: 0°C to 40°C (32°F to 104°F)

Calculating Capacity: 12 digits maximum

Dimension: 332mm (L) x 207 mm (W) x 73.5mm (H) /

13-5/64" (L) x 8-5/32" (W) x 2-57/64" (H)

Weight: 1,590 g (3.05 lbs)

(Subject to change without notice)



The bottom case, middle case and battery cover in this product are made from recycled Canon copier plastic.

### European Union (and EEA) only.

These symbols indicate that this product is not to be disposed of with your household waste, according to the WEEE Directive (2002/96/EC), the Battery Directive (2006/66/EC) and/or your national laws implementing those Directives.

This product should be handed over to a designated collection point, e.g., on an authorized one-for-one basis when you buy a new similar product or to an authorized collection site for recycling waste electrical and electronic equipment (EEE) and batteries and accumulators. Improper handling of this type of waste could have a possible impact on the environment and human health due to potentially hazardous substances that are generally associated with EEE. Your cooperation in the correct disposal of this product will contribute to the effective usage of natural resources.

For more information about the recycling of this product, please contact your local city office, waste authority, approved scheme or your household waste disposal service or visit [www.canon-europe.com/environment](http://www.canon-europe.com/environment).

(EEA: Norway, Iceland and Liechtenstein)

